

$$E = MC^2$$

The *Energy* of the 21st century is *Information*.

**Envision =
Management
Control
Center**

...for your enterprise

Gain the *Envision* advantage:

Develop your own custom
“Management
Command & Control
Center.”

- √ *Envision* is widely used by major organizations, business consultants, and analysts around the world.
- √ *Envision* synergistically links enterprise modeling, strategic planning, analysis, design, simulation, data management and reporting facilities.
- √ *Envision* provides many powerful reporting options: Document Publishing, Matrix Analysis, XML interface, and a SQL query facility.
- √ *Envision* offers “Smart Importing” from standard existing data sources, tables, and external files.
Powerful import/export capabilities, including extensive XML capabilities, facilitate data exchange with other tools and applications.

ENVISION

ENVISION[®]

puts you in the driver seat!

We designed *Envision* with ease of use, adaptability, customizable views, multi-user and meta-modeling functionality as our priorities.

Key Features

Customized Enterprise Architecture

- Intuitive Graphic Interface
- Adaptive & Agile
- Leverage all types of Business Information
- Powerful Reporting Options
- Multi-user Workgroup Support

Today’s agile businesses need to analyze and evaluate their Enterprise Architecture from multiple stakeholder perspectives. Various frameworks can offer help with Business Process Management, Risk Management, Requirements Management, Systems Design, and Technology Implementation. *Envision* not only supports these frameworks but also gives you the ability to visualize the potential impact of changes and accurately model these interactions.

Envision can help you!
Call us today to get started.

Future Tech Systems, Inc.

824 East Main Street
Auburn, WA 98002

Phone: (253) 939-7552
Fax: (253) 735-6763

www.future-tech.com

ENVISION[®]

***Energizes Your
Enterprise!***

$$E = MC^2$$

**Enterprise =
Management
Control
Center**

Future Tech Systems, Inc.

Auburn, WA

www.future-tech.com



energizes your enterprise

- Identify key enterprise assets
- Capture and leverage "best practices"
- Manage, control, and improve these key enterprise assets
- Become more agile in order to survive in tomorrow's unpredictable business climate

To significantly improve agility, productivity, quality & reliability, you need to be able to track the flow of information within and between various organization and projects.

The idea behind information leveraging is working smarter; building a common consistent shared set of enterprise models. This eliminates redundant or competing efforts, saving time and money.

Gain insight into your business

"As is" models can track goals & requirements, measure current processes, systems, and technology, and allow you to focus on critical business areas.

Evaluate options with confidence Identify costs and timing to find "quick-win" and significant, long term changes.

Improve your competitive position Decrease your reaction time to competitive pressures and user needs.

Leverage shared information

Document existing and future business information (goals, requirements, processes, procedures, risks, roles, systems, technology, data, etc.).

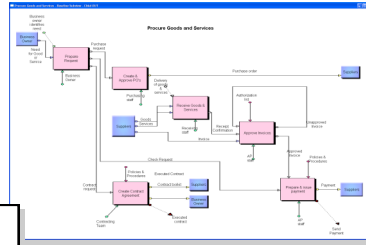
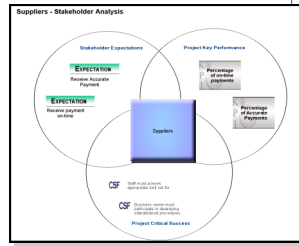
Communicate to all Stakeholders

Build graphical executive information systems tied to the underlying business information.

Increase Productivity

ENVISION helps improve your enterprise ...not just flowchart it!

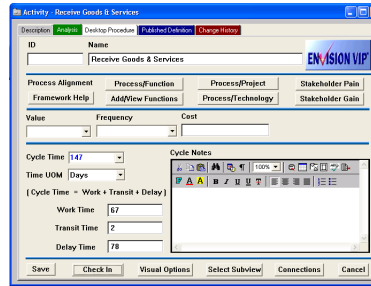
Capture your enterprise architecture, business processes, systems, technology, and provide ready access using in one, common interface.



- Add pizzazz to your models with graphics and simulation.
- Automatically propagate changes through all models at once.

Model Metrics

Drawing an object with **Envision** includes its metrics automatically in all relevant calculations. The benefit of this is greater accuracy of your information.



Find errors early

- See the impact of changes before you make them. Model and analyze solutions before implementation! Reduce costly trial and error.
- Use **Envision's** consistency checking features to minimize human error in the modeling process.

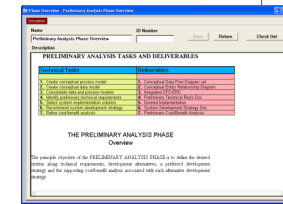
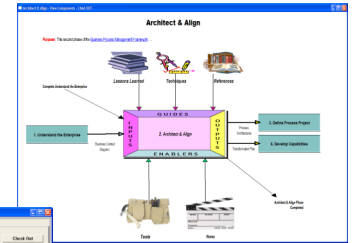
Class	Object	Diagram	Manage & Report Project Financials	Process Goods and Services	Approve Invoice	Generate Bill Of Materials
Business assessment	20					
RSI Inputs	47					
Policy generation	58					
Customer payment	25					
Address P&L	17					
Allocation Expenses	44					
Billing information	32					
Invoice	10					
Business needs	10					
Expense Report	10					
CapEx/OpEx	20					
Customer Request	30					
Customer feedback	20					
Customer needs	30					
Capital Cost Estimate	10					
Customer information	37					
Cash accounting	30					
Customer Function	60					



Envision is truly multi-user. Intuitive support for work groups helps maintain project integrity and facilitate business "team efforts".

Cultivate Quality

Follow virtually any structured methodology for design and implementation.



Centralize your data

Once you have defined information, it remains in the data repository to be validated, refined and reused throughout your enterprise. Any changes are automatically updated throughout the entire project, both graphically and textually.



Meet the Challenges Facing Businesses Today and Tomorrow

- Document existing and future business information (assets, processes, systems, technology, data, etc.).
- "To be" models show the investment required and benefits to be gained by process improvement. Use **Envision** to maintain a flexible, dynamic, "Management Control Center".
- Publish online training for new systems, processes and procedures with **Envision's** easy to use *Save as Web* feature, making it easy to transition from old to new.