

“Envisioning Your Enterprise Your Way!”

Future Tech Systems, Inc

www.future-tech.com



Key Features

Intuitive User Interface:

Envision offers a highly customizable graphical user interface that is easy to use and understand. Incorporate standard modeling shapes, custom shapes, clip art and video boardroom quality output.

Leverage Information:

Use the same data in many planning and production contexts. **Envision's** underlying data repository stress and manages all project information, allowing highly technical and structured analysis and output without programming.

Adaptable:

Use almost any structured or object-oriented methodology to represent processes, systems, and structures. Authorized system administrators may make methodology changes at any point within a project.

Powerful Reporting Options:

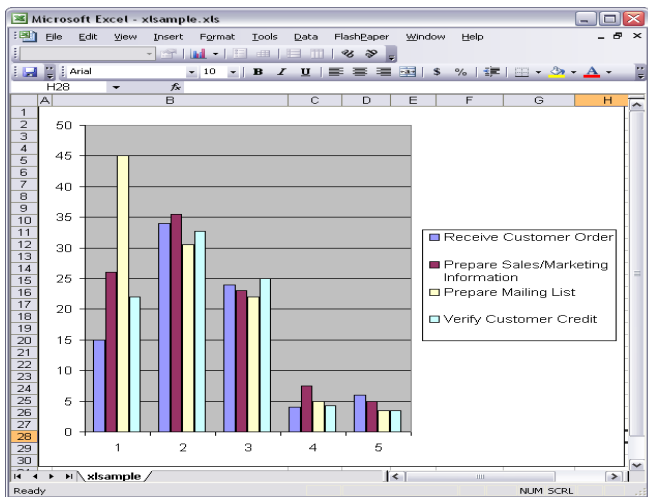
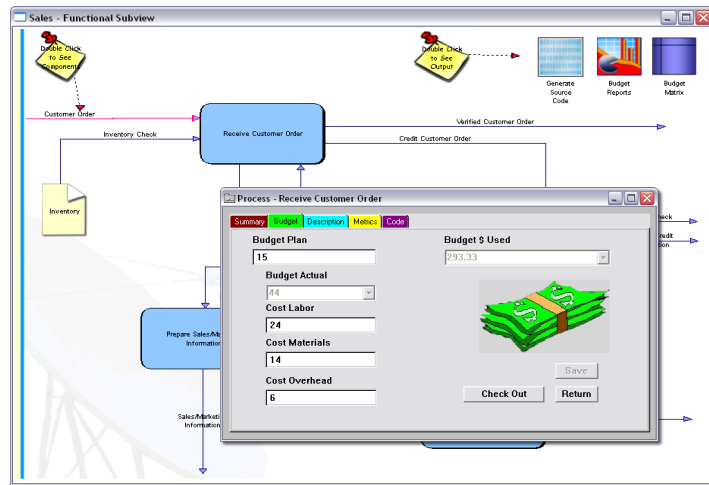
Envision offers powerful reporting tools such as the Document Formatter, Matrix Analysis, and SQL Query Facility. A user can easily export to outside applications including word processors, report writers, spreadsheets, and databases.

Multi-User Support:

Designed from the ground up as a multi-user system, Envision supports the way people work together, yet maintains the security and integrity of the repository information.

Dynamic Linking:

Envision links easily with other development and office productivity tools, allowing them to be encapsulated under a common interface.



This excel chart was created automatically by Envision using underlying budget information associated with selected processes. The user simply double clicked on the Budget Reports icon and Envision did the rest—including starting Excel, exporting/importing data, and sending appropriate macros to format the chart