

“Envisioning Your Enterprise Your Way!”

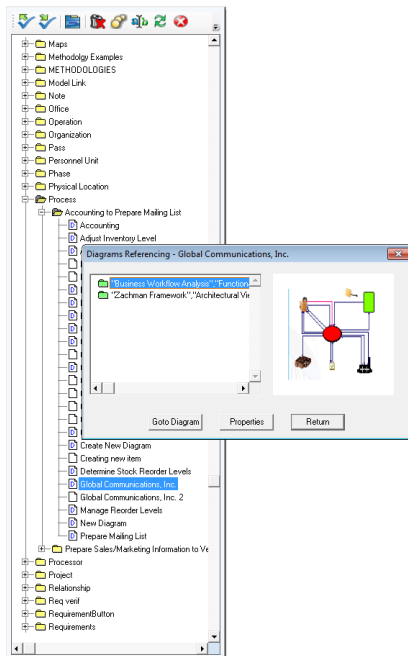
# Future Tech Systems, Inc

www.future-tech.com



Envision makes finding the information you want quick and easy with features like the *Data browser*, *Matrix Analysis*, *Diagram Tree*, and a user interface with unlimited concurrent views.

Accessing Your Repository Data



Above: Data Browser and Diagram Reference dialog box showing all occurrences of Customer Order



Above: Diagram Picker

### Data Browser

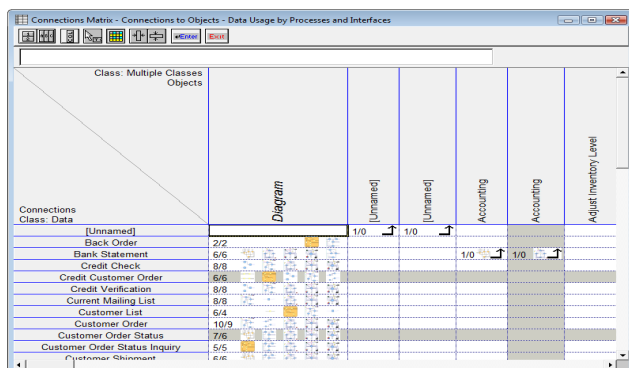
- ✓ View all repository items in a structured directory tree.
- ✓ View all references of an item throughout the project.
- ✓ Make changes to items
- ✓ Drag and Drop items directly from the Data Browser onto diagrams.

### Diagram Picker

- ✓ View diagram thumbnails in their appropriate hierarchy.
- ✓ Double click on a thumbnail to open a diagrams in a separate window
- ✓ Jump between diagrams or view them concurrently in multiple windows.

### Matrix Analysis

- ✓ Define custom Item/Attributes, Connections or Relational Matrices
- ✓ Use Item/Attributes matrices to do quick data analysis and entry
- ✓ Connections matrices (right) show the flow of data between objects or connectors
- ✓ Relational matrices define any type of traditional (CRUD) or custom relationships between repository items.



Above: Connections Matrix generated by Envision

Tired of shuffling endless sheets of printed diagrams, graphs and spreadsheets looking for the right information?