

ENVISION[®] VIP

*Empowers Your
Business!*

Build your own...

***E**nterprise
Management **C**ontrol **C**enter*

E = MC²

Future Tech Systems, Inc.

www.future-tech.com

824 East Main Street, Auburn, WA (253) 939-7552

ENVISION[®]

leverages all your business information

To significantly improve productivity quality and reliability, you need to get more out of the business information you already have.

The idea behind information leveraging is working smarter; building a common consistent set of business models. This eliminates redundant or competing efforts, saving time and money.

Gain insight into your business "As is" models measure current processes, systems, and technology, allowing you to focus on critical business areas.

Envision your future "To be" models show the investment required and benefits to be gained by re-engineering. Use **Envision** to maintain a flexible, dynamic, "Management Control Center".

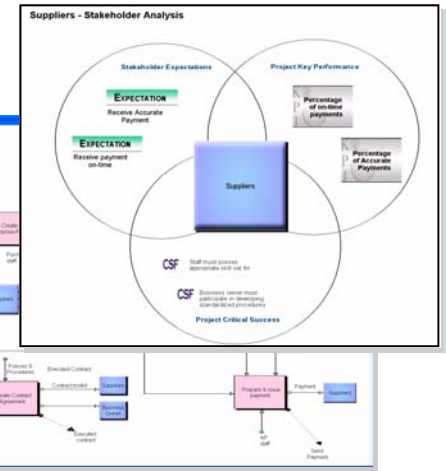
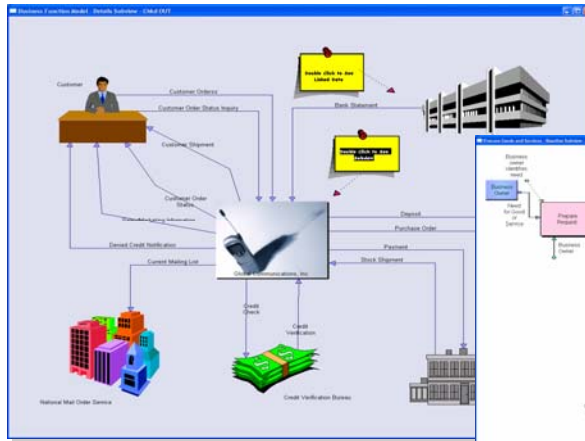
Evaluate options with confidence Measure cost and timing to find "quick-win" and significant, long term changes.

Improve your competitive position Decrease your reaction time to competitive pressures and user needs.

Leverage shared information Document, existing and future business information (processes, systems, technology, data, etc.).

Build graphical executive information systems tied to the underlying business information

Increase Productivity



ENVISION[®] helps improve your business ... not just flowchart it!

Information is stored in an extensible object-oriented repository, not just picture files. Processes, organizations, tasks, information systems can be fully documented and analyzed, and any number of additional subviews can also be captured. Spreadsheets, project plans and presentation tools can be easily linked.

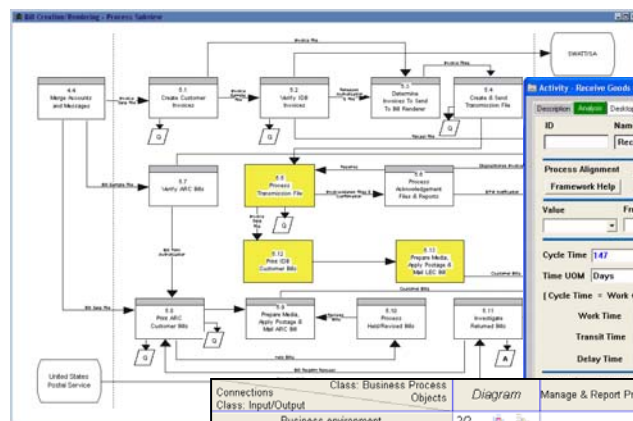
Enhance Reliability

Model Metrics

Drawing an object with **Envision** includes its metrics automatically in all relevant calculations. The benefit of this is great accuracy of your information.

ENVISION[®] makes it easy to:

- ✓ Model processes, services, applications, and all other types of business information.
- ✓ Identify and eliminate redundancies.
- ✓ Gain control over information.
- ✓ Distinguish between urgencies and priorities.
- ✓ Consolidate data collection, analysis, training and presentation efforts.



Connections	Class: Business Process Objects	Diagram	Manage & Report Project Financials	Procure Goods and Services	Approve Invoices	Generate bill	Bill Customer
Business environment	2/2						
ROI Inputs	4/3		1/0				
Policy parameters	5/5						1/0
Customer payment	2/2						
Affiliates P&L	1/1						
Allocation Expenses	4/4						
Billing information	3/2						
Invoice	18/18	1/0		1/0	1/0	0/1	2/0
Business needs	1/1						
Expense Report	1/1						
Capabilities	2/2						
Customer Request	2/2						
Customer feedback	2/2						
Customer needs	3/2						
Capital Cost Estimate	3/3						
Customer information	3/3						
Cash reporting	1/1						
Company Branding	5/3						

Find errors

- See the outcome of changes before you make them. Model and analyze solutions before implementation, reducing costly trial and error.
- Use **Envision's** consistency checking features to minimize human error in the modeling process.

ENVISION[®]

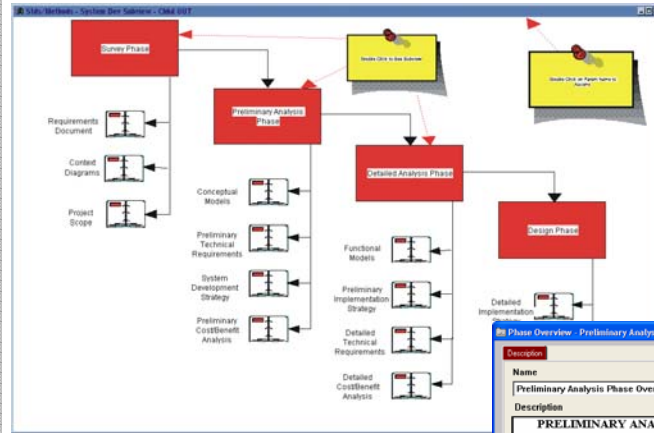
Is the smart approach to improving productivity

The idea is simple. The best way to increase productivity is to work not only faster, but smarter. Minimize the steps, people and risks associated with your business.

As you model your business, you can leverage key resources to their fullest extent.

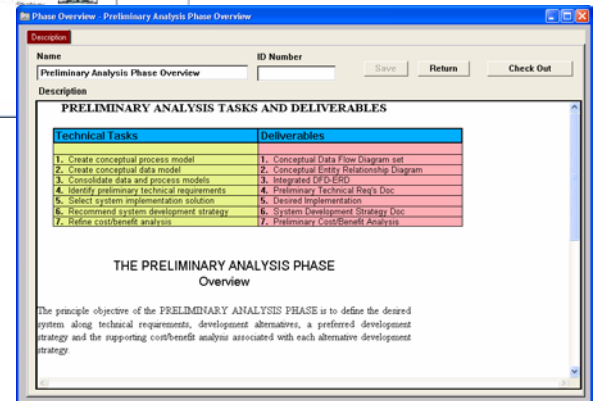
- ✓ **Document processes**, procedures, services, systems and information as you develop your working business models. Multi-user **Envision** improves communication and data integrity. Use **Envision** to model, analyze, control and leverage all your information.
- ✓ **Add pizzazz to your models** with pictures, animation*, and multimedia. Graphics and video make changes easier to visualize.
- ✓ **Automated updating** of document and presentation materials. **Envision** helps your audience visualize the “what-ifs” prior to their actual implementation, improving confidence in new projects.
- ✓ **Reduces training and support costs**, Employees benefit from on-line process documentation, animation* and video.
- ✓ **Envision eases continuous transition** from old to new by continually maintaining the consistency of all documentation and training aids.

Improve Quality



Centralizes your data

Once you have defined information, it remains in the data repository to be validated, refined and reused throughout your project.



Sharpen Your Competitive Edge

ENVISION[®] your solutions

Gain the advantage of **Envision**: Develop your own custom “Management Control Center” for your own dynamic organizations.

- ✓ **Envision** from Future Tech Systems is widely used by major organizations, business consultants and analysts around the world.
- ✓ **Envision** synergistically links enterprise modeling, strategic planning, analysis, design, simulation, data management and reporting facilities.
- ✓ **Envision** provides many powerful reporting options: Document Publishing, Matrix Analysis, XML interface, and a SQL query facility.
- ✓ **Envision** offers “Smart Importing” from standard existing data sources. Powerful import/export capabilities, including extensive XML capabilities, facilitate data exchange with other tools and applications.

Meet the Challenges Facing Businesses Today with Envision

In today’s world, competitive forces permeate both the public and private sectors.

- ✓ Financial pressures are forcing companies and government to control costs and shrink budgets.
- ✓ Technology is producing competitive opportunities, leaving little time to shift business models.
- ✓ Organizations must differentiate their products and services to outpace their competition.
- ✓ Internal processes must adapt to the changing needs of workplace demands.

With **Envision**, you can gain control over the information you already have and apply it with synergistic results. This facilitates cooperative interaction among groups—creating an enhanced, combined effect.

ENVISION[®]

supports teamwork

Envision supports work groups, facilitating team efforts between departments. Intuitive user controls maintain project integrity, enabling work groups to manipulate model data.

ENVISION® puts you in the drivers seat!

We designed **Envision** with adaptability, modeling functionality and ease of use as our priorities.

“The thing I like best about **Envision** is its flexibility and adaptability to an organization’s specific needs. I especially like **Envision’s** ability to tailor its graphic interface and repository need to the class of problems a real organization has.”

-Ken Orr.
International
Consultant / Lecturer

ENVISION® HIGHLIGHTS

Key Features

Adaptable: **Envision** gives you a framework to start with, but doesn’t fence you in. The look and feel of all modeling objects, processes, systems, and structures is totally customizable.

Graphical: **Envision** allows you to use the standard modeling shapes, or you can easily include your own custom shapes, clip art, and video clips for boardroom quality output.

Information Leveraging: **Change once, update everywhere.** The object-oriented underlying repository in **Envision** allows for various stakeholder views, all linking to the same, common underlying business data. **Envision** also facilitates easy importing/exporting from/to other programs.

Powerful Reporting Options: **Envision** includes powerful Document Formatter, Matrix Analysis, XML and SQL capabilities, for exporting to word processors, report writers, spreadsheets, databases, etc.

Multi-user Work Groups: **Envision** was designed from the ground up as a multi-user system, **ENVISION** supports the way people work together, yet maintains the security and integrity of the repository information.

Toolset Encapsulation: **Envision** allows other development and office productivity tools to be encapsulated under a common interface.

ENVISION = Management Control Center – to better manage your business

Faced with the challenge of continuous change, many enterprises have turned to Business Process Management and Enterprise Architecture Frameworks to help them visualize the potential impact of changes in process, technology and organization. Accurately modeling these complex domains is crucial to their future survival. **Envision** can help! Call us today to get started.

User Applications

Envision from Future Tech Systems is widely used by business consultants and analysts in major organizations for:

- ✓ Enterprise Architecture Documentation, Design, and Analysis for any of the following architectures:
 - Process
 - Systems
 - Technology
 - Information
 - Data
 - Networks
 - Services
- ✓ Procedure Documentation, Tracking, and Training
- ✓ Framework and Methodology Documentation, Implementation, and Training
 - TOGAF, DODAF, Zachman
 - BPM Frameworks
 - Requirements management
 - Risk Analysis
 - UML based Design/Modeling
- ✓ Compliance Certification
 - ISO 9001
 - Sarbanes-Oxley
- ✓ Graphical Executive information systems
- ✓ Model based training

Future Tech Systems, Inc

824 East Main Street, Auburn, WA 98002
Phone: (253) 939-7552 Fax: (253)735-6763

www.future-tech.com